



DM200027

Electromagnetic ripple tank

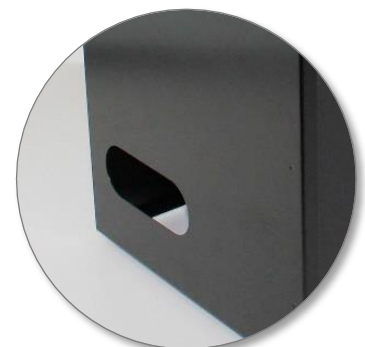
Simulation device to study waves phenomenon.

School level

Senior high school, higher education.

Technical features

Tank with projection mirror and viewing screen
 Ripple generator with adjustable frequency (1-60 Hz) with display
 Meld vibrator – DM200005 – with moving support
 LED strobe 3 W flexible
 Power supply: 12V / 1 Ah direct current
 Viewing screen: 400 x 330 mm
 1 set of 4 exciters:
 simple, double, multiple and plane
 1 set of 7 accessories:
 trapezoid, biconcave, biconvex, and parallels faces
 Draining pipe – spirit level – electrical switch On/Off
 Dimensions of parcel: 400 x 560 x H460 mm
 Total weight: 12 kg (suitcase 2.9 kg included)
 Packaging: individual box + accessories suitcase



Grip handle and draining pipe

Product advantages

- **Ready for use product:** set up in 3 mn.
- **Amplified visibility:** LED lighting and large viewing screen.
- LED strobe with **synchronous and asynchronous** frequency.

Examples of experiments

- Generation of waves
- Huygens principle
- Reflection/refraction of waves
- Waves interferences
- Doppler's effect

COMPONENTS

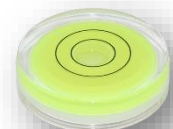
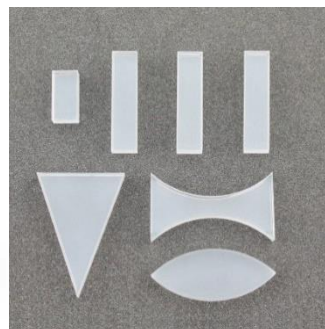


Tank with projection mirror and viewing screen, LED strobe and moving support for vibrator

SUITCASE COMPONENTS



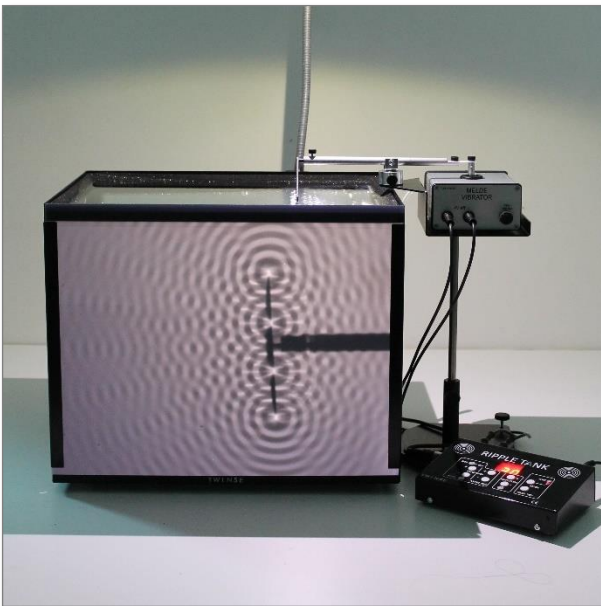
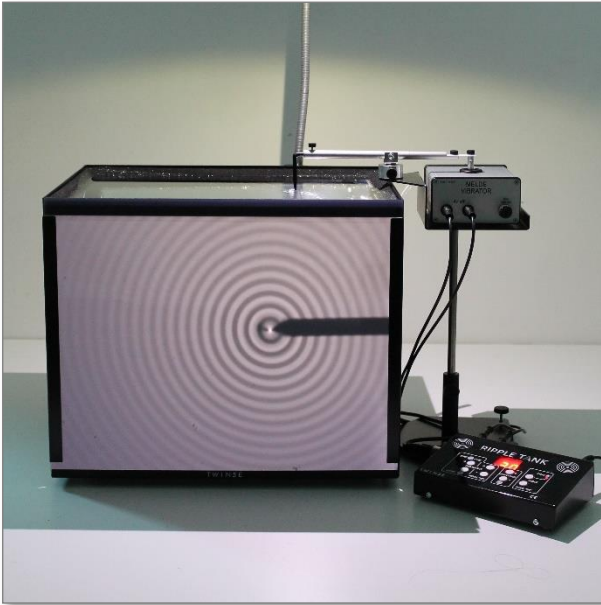
Ripple generator, power supply connectors, and Melde vibrator with its transmitter



Electrical switch Jack 2.5, set of wave exciters, set of transparent obstacles and spirit level

EXPERIMENTS

Simple waves, double, multiple and plane



Experiments with obstacles

