
Vernier Rotary Motion Sensor

(Order Code RMV-BTD)

The Vernier Rotary Motion Sensor is a bidirectional angle sensor designed to measure rotational or linear position, velocity and acceleration. It is used for a variety of investigations, including:

- Measurement of rotational inertia
- Verification of the conservation of angular momentum
- Verification of the Law of Malus
- Studying the motion a physical pendulum
- Measurement of linear position for experiments such as the inverse square law of light
- Measurement of linear position for diffraction patterns or interference patterns

What is included with the Rotary Motion Sensor?

The Vernier Rotary Motion Sensor product includes

- Rotary Motion Sensor
- Thumb screw
- 3-step pulley and mounting screw
- O-ring
- Sensor clip



Configuring the Rotary Motion Sensor

The 3-step pulley can be mounted on the rotating shaft in either of two orientations: with the wide side of the pulley near the sensor body, or with the narrow side of the pulley near the sensor body. The easiest way to insert the 3-step pulley on the Rotary Motion Sensor shaft is hold the shaft to prevent rotation as you turn the pulley to

align the key to the slot. The O-ring can be slipped over the outer pulley to increase friction when the pulley is in contact with a surface.

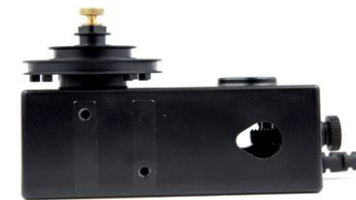
The sensor clip can be inserted into the sensor body or the end of the rotating shaft. A sensor can be inserted into the clip. This arrangement allows you to attach a sensor to the Rotary Motion Sensor. For example you could attach a Magnetic Field Sensor to the Rotary Motion Sensor and use the Rotary Motion Sensor to accurately measure the angular position of the sensor as it is rotated to determine north.



The thumb screw can be threaded into the back of the sensor allowing the Rotary Motion Sensor to be attached to a ring stand.



The sensor also has a set of accessory mounting holes which allow it to connect to existing accessories.



Collecting Data with the Vernier Rotary Motion Sensor

This sensor can be used with the following interfaces to collect data:

- Vernier LabQuest[®] with or without a computer
- Vernier LabQuest[®] Mini with a computer
- Vernier LabPro[®] with a computer or TI graphing calculator
- Vernier SensorDAQ[®]
- CBL 2[™]

Here is the general procedure to follow when using the Rotary Motion Sensor:

1. Connect the sensor to the interface.
2. Start the data-collection software.
3. Only LabQuest 1.1 with Logger Pro 3.6.1 or newer will identify the Rotary Motion Sensor and load a default data-collection setup. You are now ready to collect data. (**Note:** all other combinations of equipment require you to manually set up the sensor or load an experiment file.)

Data-Collection Software

This sensor can be used with an interface and the following data-collection software.

- **Logger Pro** This computer program is used with LabQuest, LabQuest Mini, and LabPro.
- **LabQuest App** This program is used when LabQuest is used as a standalone device.
- **VSTApp** This calculator application for the TI-83 Plus and TI-84 Plus contains a program called DaRotary which supports the Rotary Motion Sensor with CBL 2 and LabPro. The app can be downloaded from www.vernier.com/calc/software/vstapps.html and then transferred to the calculator. See www.vernier.com/calc/software/ for more information on the App and Program Transfer Guidebook.
- **LabVIEW** National Instruments LabVIEW[™] software is a graphical programming language sold by National Instruments. It is used with SensorDAQ and can be used with a number of other Vernier interfaces. See www.vernier.com/labview for more information.

Specifications

Resolution	1° or 0.25°
Optical Encoder	Bidirectional, quadrature encoder, 360 cycle per revolution
Maximum Speed	30 rev/s at 1° resolution 7.5 rev/s at 0.25° resolution
3-step Pulley	10 mm, 29 mm and 48 mm groove diameter

Note: This product is to be used for educational purposes only. It is not appropriate for industrial, medical, research, or commercial applications.

How the Rotary Motion Sensor Works

The Rotary Motion Sensor uses a quadrature optical (incremental type) encoder to measure the amount and direction of rotation. The encoder, which is attached to the rotating sensor shaft, consists of a coded pattern of opaque and transparent sectors. The quadrature encoder produces two pulse output patterns 90° apart in phase. The position of the shaft is determined by counting the pulses. The phase relationship between the output signals determines the direction of rotation.

Example Experiments

The following examples show various ways to use the Rotary Motion Sensor. Some of these examples use accessory products described below.

Atwood's Machine

Attach the 3-step pulley to the rotating shaft. Use the thumb screw to attach the Rotary Motion Sensor to a ring stand. Attach each end of the string to a mass and run the string over the pulley. Use the Rotary Motion Sensor to determine the acceleration of the system.



Half-Atwood's Machine

Attach the 3-step pulley to the rotating shaft. Mount the Rotary Motion Sensor on the end of the Vernier Dynamic System. Attach a string to a cart, run the string over the pulley and attach a weight on the end of a string.



Inverse Square Law of Light

Attach the 3-step pulley to the Rotary Motion Sensor. Slip the O-ring over the largest step on the pulley. Attach the sensor clip to the Rotary Motion Sensor. Attach a Light Sensor to the clip. Place the Rotary Motion Sensor on the table top with the Light Sensor pointed at a light source and the O-ring in contact with the table. As you move the Rotary Motion Sensor toward and away from the light source, you can collect light level data as a function of distance.



Moment of Inertia of a Disk (requires Rotational Motion Accessory Kit, see below)

Attach an Ultra Pulley to the Rotary Motion Sensor. Attach the 3-step pulley to the rotating shaft. Attach the disk to the 3-step pulley. Attach a string to the underside of the hub. Attach the Ultra Pulley to the Rotary Motion Sensor using the Ultra Pulley Swivel Mount. Run the string over the Ultra Pulley and attach a weight to the end of the string. Use the weight to apply a torque to the system while the Rotary Motion Sensor measures the angular acceleration.



Moment of Inertia of Point Masses

(requires Rotational Motion Accessory Kit, see below)

Use the same set up as described in the previous section. This time attach a rod with two masses to the 3-step pulley. Use the weight to apply a torque to the system while the Rotary Motion Sensor measures the angular acceleration.



Conservation of Angular Momentum

(requires Rotational Motion Accessory Kit, see below)

Attach disk to the 3-step pulley. Give the disk a spin. While the system is rotating, drop a second disk onto the first disk. Observe the change in the angular velocity before and after the mass is added to the system.



Motion of a Physical Pendulum

(requires Rotational Motion Accessory Kit, see below)

Attach the 3-step pulley to the rotary motion sensor with the small step next to the sensor body. Attach the center of the rod with two masses to the pulley. Position the masses so they are not symmetric. Position the sensor so the face of the pulley is vertical. Start the pendulum swinging, and determine the angular acceleration as a function of the angle.



Accessories

Rotational Motion Accessory Kit (AK-RMV) This kit provides a variety of items that add to the versatility of the Rotary Motion Sensor. The items include the following.

Large aluminum disks (2)	Used with the inverted 3-step pulley to observe conservation of angular momentum.
Steel disk with central hole	Used with the hub to measure rotational inertia of a cylinder
Hub	Used with the disk described above to measure rotational inertia of a cylinder.
Hollow rod	Used with the masses to measure rotational inertia or to make a pendulum
Masses (2) with locking screws	Used with the hollow rod to measure rotational inertia.
Spindle/screw	Used to hold disks in place
Ultra Pulley	Use to apply a torque to the 3-step pulley
Ultra Pulley Swivel Mount	Allows the Ultra Pulley to be connected to the Rotary Motion Sensor



Rotary Motion Motor Kit (MK-RMV) This kit includes a small 3–12 V electric motor, pulley, rubber band belt, motor clip and mounting screw. The motor can be attached to the Rotary Motion Sensor, which can be used to record the motion of the motor shaft. The motor can be used as a tachometer, generator, etc. You can also perform experiments that investigate motor efficiency in different conditions.



Warranty

Vernier warrants this product to be free from defects in materials and workmanship for a period of five years from the date of shipment to the customer. This warranty does not cover damage to the product caused by abuse or improper use.



Measure. Analyze. Learn.™

Vernier Software & Technology

13979 S.W. Millikan Way • Beaverton, OR 97005-2886

Toll Free (888) 837-6437 • (503) 277-2299 • FAX (503) 277-2440

info@vernier.com • www.vernier.com

Rev. 3/14/11

Logger Pro, Logger Lite, Vernier LabQuest, Vernier LabQuest Mini, Vernier LabPro, Go!Link, Vernier EasyLink and other marks shown are our registered trademarks in the United States. CBL 2, TI-GRAPH LINK, and TI Connect are trademarks of Texas Instruments.

All other marks not owned by us that appear herein are the property of their respective owners, who may or may not be affiliated with, connected to, or sponsored by us.



Printed on recycled paper.